

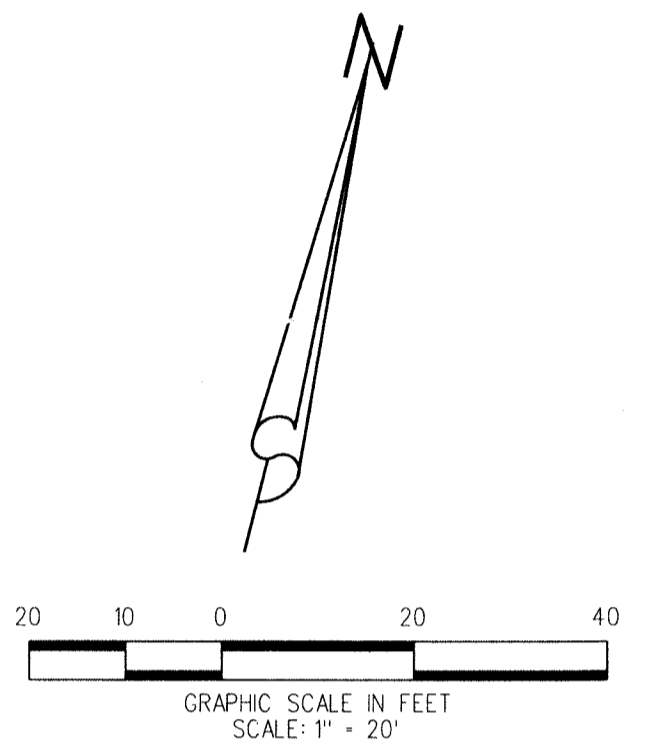
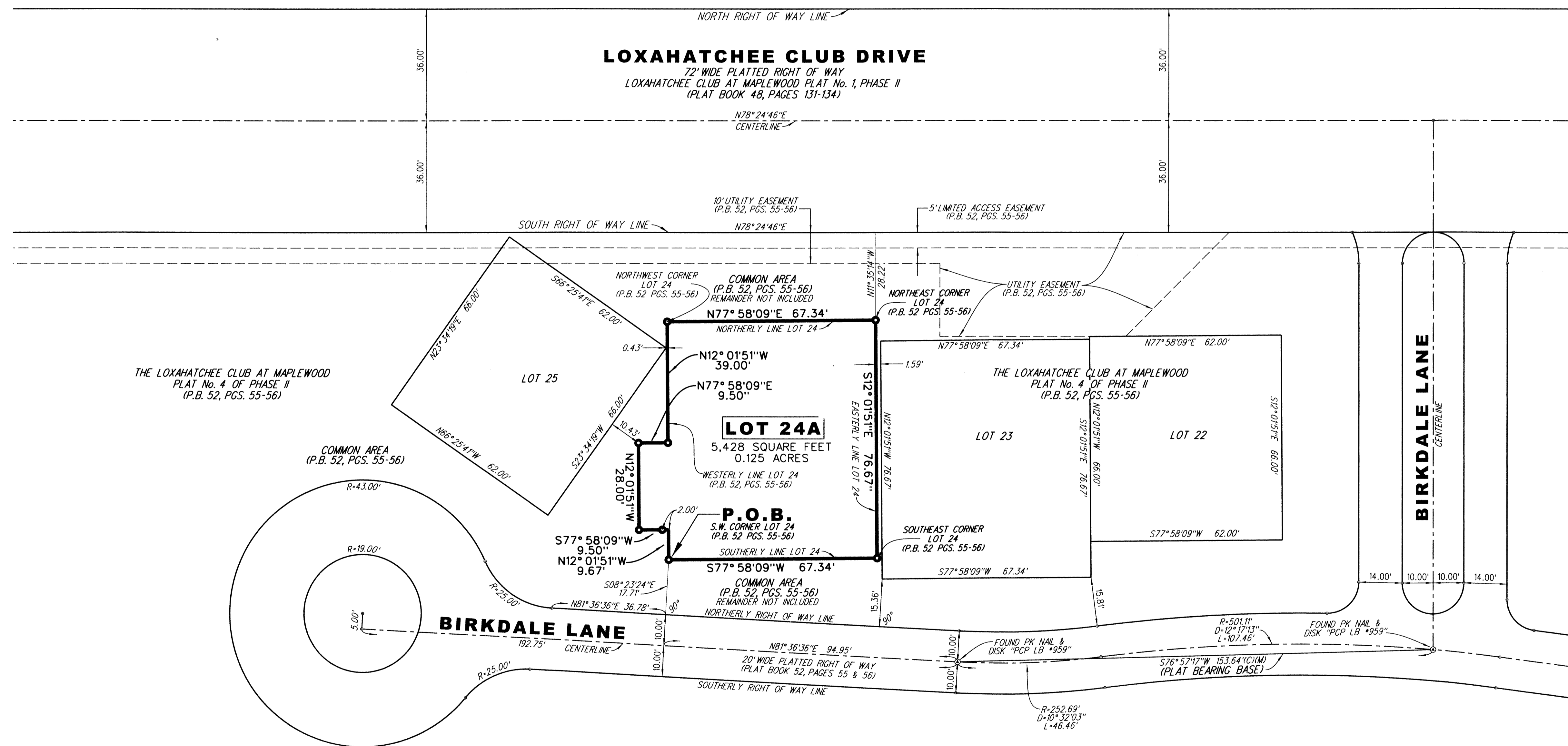
# LOXAHATCHEE CLUB AT MAPLEWOOD PLAT No. 29 OF PHASE II

BEING A REPLAT OF LOT 24, AND A PORTION OF THE COMMON AREA,  
 AS SHOWN ON THE PLAT OF THE LOXAHATCHEE CLUB AT MAPLEWOOD PLAT No. 4 OF PHASE II,  
 RECORDED IN PLAT BOOK 52, PAGES 55 AND 56, PUBLIC RECORDS OF PALM BEACH COUNTY, FLORIDA  
 LYING IN SECTION 11, TOWNSHIP 41 SOUTH, RANGE 42 EAST  
 TOWN OF JUPITER, PALM BEACH COUNTY, FLORIDA

SEPTEMBER 2020

118

SHEET 2 OF 2



**ABBREVIATIONS:**

- (C) = CALCULATED
- (M) = MEASURED
- D = CURVE'S DELTA ANGLE
- L = CURVE'S ARC LENGTH
- MON. = MONUMENT
- O.R.B. = OFFICIAL RECORD BOOK
- P.B. = PLAT BOOK
- PCP = PERMANENT CONTROL POINT
- PG. = PAGE
- PGS. = PAGES
- PRM = PERMANENT REFERENCE MONUMENT
- R = CURVE'S RADIUS
- W/ = WITH
- = SET 5/8" IRON ROD WITH AN ALUMINUM CAP
- STAMPED P.R.M. LB #4431

**LIDBERG LAND SURVEYING, INC.**

LB4431 675 West Indiantown Road, Suite 200, Jupiter, Florida 33458 TEL. 561-746-8454

CAD:	K:\UST \ 114142 \ 52-55 \ 19-102-306 \ 19-102-306.DGN		
REF:			
FLD.:	FB.	PG.	JOB 19-102-306
OFF. CASASUS			DATE JULY 2020
CKD. D.C.L.	SHEET 2	OF 2	DWG. 019-102P